



DESIGN

VIBEKE KLINT

SELECTED RUGS

NORDICMODERN

DESIGN

VIBEKE KLINT

SELECTED RUGS

NORDICMODERN



Vibeke Klint, Copenhagen, 1950
School of Arts and Crafts Copenhagen

VIBEKE KLINT

Vibeke Klint (1927-2019) has been described as the 20th century's most significant Danish weaver and designer. Her life's work, which includes everything from rugs, home and clothing textiles to interior design and decoration projects, teaching and communication, is an important part of Danish design and Danish cultural heritage.

Vibeke Klint studied weaving at the School of Arts and Crafts in Copenhagen, graduating in 1949. She was an apprentice of Gerda Henning, working at her workshop during her apprenticeship. When Gerda Henning died in 1951, it was the wish of her husband, Gerhardt Henning, that the young weaver take over the workshop.

In 1954, she married landscape architect Morten Le Klint (1918-1978), son of architect and designer Kaare Klint and grandson of Peder Vilhelm Jensen-Klint, who designed Grundtvig's Church, among other buildings. They had three children.

Vibeke Klint has exhibited all over the world. She also had an interest in and took the time to participate in professional work as a board member of the Danish Design Council, the Arts and Crafts Council, the World Crafts Council, and the Academy Council.

Throughout the years Vibeke Klint has received numerous of prizes and marks of honour, such as The Eckersberg Medal (1972), The Engelhardt's Grant (1978), The Honorary Jubilee Grant from the Danish National Bank (1992), The Prince Eugen Medal (1996) to mention but a few. In 2000 Vibeke Klint was appointed Knight of Dannebrog by the Queen of Denmark.



Rug VK-1 Detail



Rug VK-1 Detail

RUG VK - 1

Colours:

Black / White

White / Black

Flat weave technique

Warp: Pure linen

Weft: NZ wool

Size approx.:

140 x 215 cm.

160 x 248 cm.

200 x 310 cm.



Rug VK-1 Black / White



Rug VK-1 White / Black



Rug VK-1 White / Black



*“I love Giersing,
Weie, Picasso and Matisse.*

*Often it is the early works,
where completely
calm surfaces are broken by
abrupt color glimps
that give me the inspiration
I am looking for.”*

Vibeke Klint



Rug VK-2 Detail



Rug VK-2 Detail

RUG VK - 2

Colours:

Light blue / White

Black / White

Flat weave technique

Warp: Pure linen

Weft: NZ wool

Size approx.:

140 x 200 cm.

170 x 240 cm.

200 x 300 cm.



Rug VK-2 Black / White



Rug VK-2 Light blue / White



Rug VK-2 Light blue / White



Rug VK-3 Detail



Rug VK-3 Detail

RUG VK - 3

Colours:

White / Black

Black / White

Warp repp technique

Details in flat weave

Warp: NZ wool

Weft: Felted English wool

Size approx.:

60 x 130 cm.

80 x 240 cm.

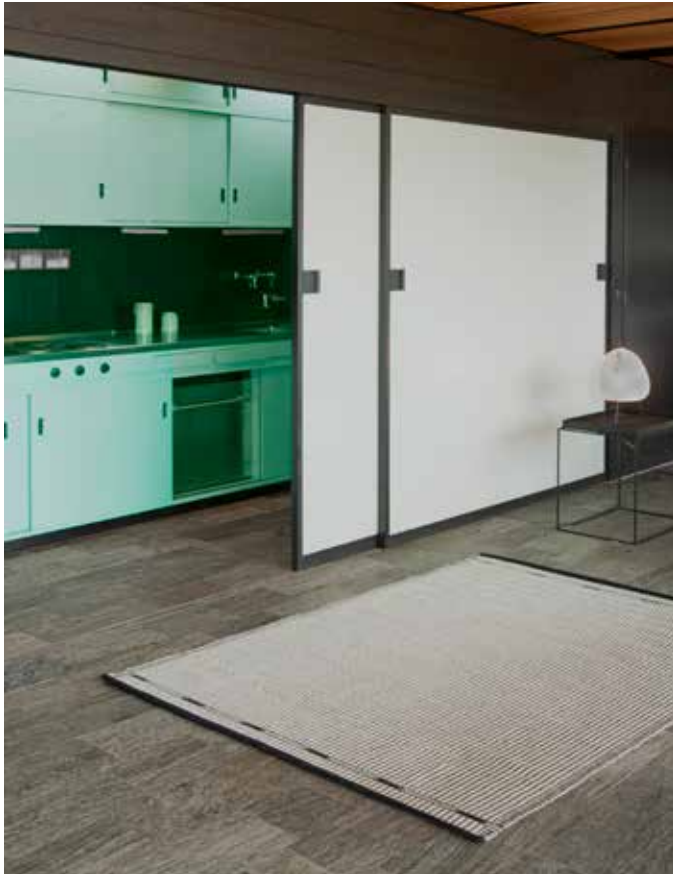
140 x 200 cm.

170 x 240 cm.

200 x 300 cm



Rug VK-3 White / Black



Rug VK-3 White / Black

*Today the rugs are hand-woven in India
All rugs are GOODWEAVE INTERNATIONAL certified*



Rug VK-4 Detail

RUG VK - 4

Colours:

Blue / Black

Warp repp technique

Details in flat weave

Warp: NZ wool

Weft: Felted English wool

Size approx.:

60 x 130 cm.

80 x 240 cm.

140 x 200 cm.

170 x 240 cm.

200 x 300 cm



Rug VK-4 Blue / Black



Rug VK-4 Blue / Black



Vibeke Klint, Tårnbæk, 1991
Cutting off the rug from the loom



Rug VK-5 Double weave technique

RUG VK - 5

Colours:
Black / White

Double weave technique

Warp: Fine Cotton

Weft: NZ wool

Size approx.:
80 x 240 cm.
140 x 200 cm.
170 x 240 cm.
300 x 300 cm.



Rug VK-5 Black / White



Rug VK-5 Black / White

*"A good weaver
is someone who understands
that color, texture
and materials have to work
together using the technique to
form a whole"*

Vibeke Klint



Rug VK-6 Detail

RUG VK - 6

Colours:
Red / Orange

Flat weave technique
Details in flat weave
Warp: Pure Linen
Weft: NZ wool

Size approx.:
80 x 240 cm.
140 x 200 cm.
170 x 240 cm.
200x 300 cm.



Rug VK-6 Red / Orange

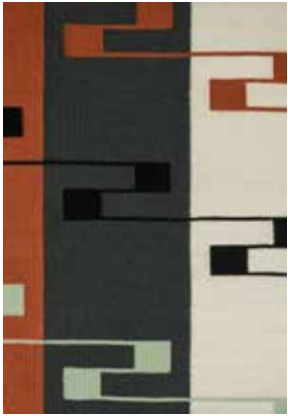


Rug VK-6 Red / Orange



Vibeke Klint, Gammel Dok, 1991

The rug is off the loom



Rug VK-8 Detail

RUG VK - 8

Colours:

Base: Charcoal / white / orange

Pattern: Black / rose / olive

Flat weave technique

Details in flat weave

Warp: Pure Linen

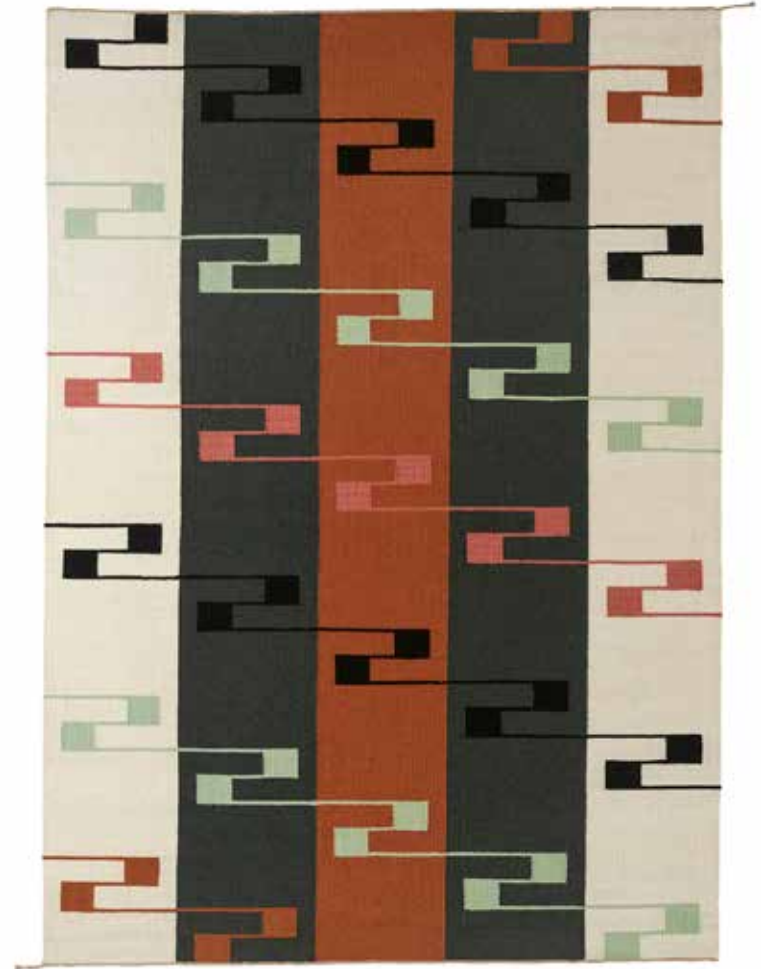
Weft: NZ wool

Size approx.:

140 x 213 cm.

170 x 240 cm.

200 x 325 cm.



Rug VK-8

Base: Charcoal / white / orange

Pattern: Black / rose / olive



*”Now you have
to plow your way through this
thick book of binding techniques,
just to find out that the simplest
way is the most beautiful”*

Gerda Henning

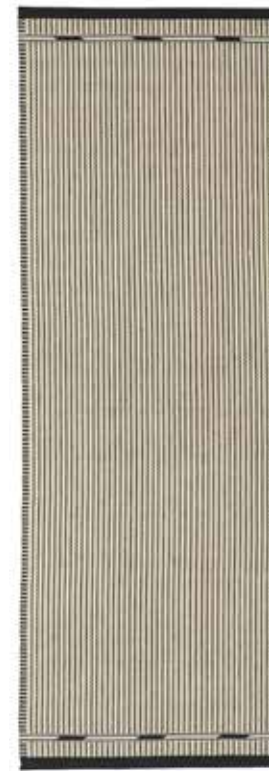
Rug VK-8

Base: Charcoal / white / orange

Pattern: Black / rose / olive

DESIGN
VIBEKE KLINT
SELECTED RUGS

SMALL RUGS



RUG VK - 3

Small rug

Colours:

White / Black

Black / White

Warp repp technique

Details in flat weave

Warp: NZ wool

Weft: Felted English wool

Size approx.:

60 x 130 cm.

80 x 240 cm.



RUG VK - 4

Small rug

Colours:

Blue

Warp repp technique

Details in flat weave

Warp: NZ wool

Weft: Felted English wool

Size approx.:

60 x 130 cm.

80 x 240 cm.



Small rug VK-4 Blue



RUG VK - 5

Small rug

Colours:

Black / White

Double weave technique

Warp: Fine cotton

Weft: NZ wool

Size approx.:

80 x 240 cm.



Small rug VK-5 Black / White



RUG VK - 6

Small rug

Colours:

Red / Orange

Flat weave technique

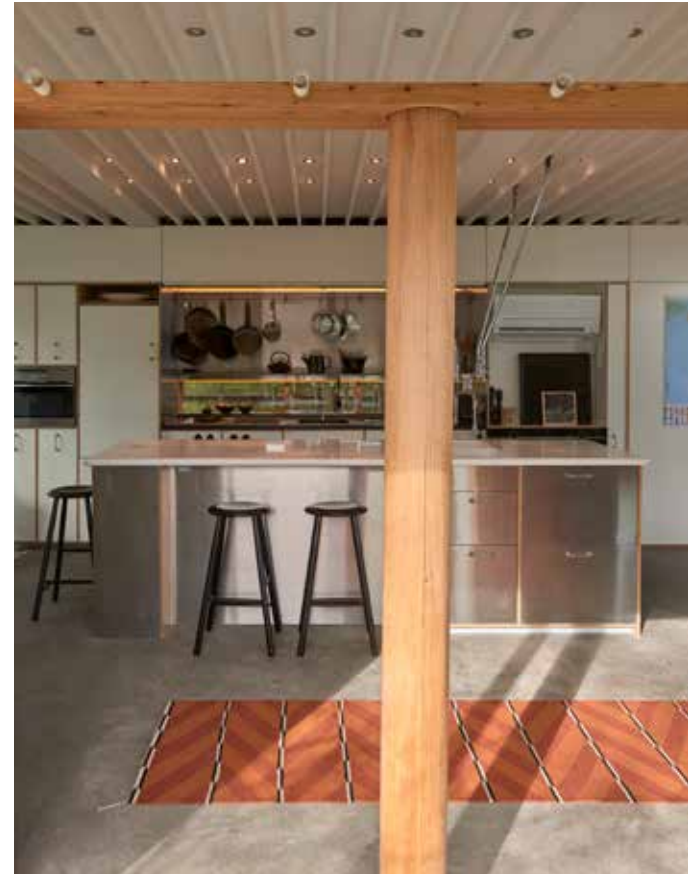
Details in flat weave

Warp: Pure Linen

Weft: NZ wool

Size approx.:

80 x 240 cm.



Small rug VK-6 Red / Orange

THE COLLECTION

In collaboration with the Klint family we have put together a collection of 7 different rug designs. The design is based on unique rugs that have never been in production before. The adapted rugs in flat-weave, warp repp, the "Lynild" (lightning pattern) technique and double weave are all techniques typically used by Vibeke Klint.

This is a relaunch of weaver and textile artist Vibeke Klint's original iconic unique rugs, underlining her valuable contribution to modern Danish design and the interaction between art and architecture. The beautiful handwoven rugs accentuate the interior design, bringing character, personality and atmosphere to a room.

Each rug is hand-woven and therefore unique. The weave varies slightly from rug to rug, depending on who has woven it. As the wool yarn is hand-dyed, there might be color variations due to the nature of the wool and the dyeing process. This is all part of the rug's character.

Our collection of hand-woven rugs designed by Vibeke Klint is made in Northern India. We work with the third generation of a local production facility with their own dye works which boasts proud traditions of craftsmanship, extensive experience of weaving technique and in-depth knowledge of materials. Together we select the most suitable yarn grades and material composition.

The rugs are GOODWEAVE INTERNATIONAL certified. This stands for sustainable and ethical production without the use of child labour.

OUR BRAND

NORDICMODERN is a Danish brand founded in 2018 by Nana Fenge and Peter Kampmann. NORDICMODERN stands for everything we are passionate about when it comes to design, ideas and good craftsmanship.

NORDICMODERN is selected products with a unique design expression that are relevant to and supplement both modern and more classic interiors; a hand-picked universe of iconic products and relaunches for all design lovers.

Our first collection is a relaunch of Danish weaver and textile artist, Vibeke Klint's, original and iconic rugs which have never been in production before. The designs have been selected in close collaboration with the Klint family and represent designs and techniques typically used by Vibeke Klint.

NORDICMODERN

Søllerødvej 111 DK-2840 Holte

instagram nordicmoderndk www.nordicmodern.dk

Art Direction: Joel Andersen

Photography: Erik Brahl, frontpage, 7, 13, 20, 28, 32, 39, 41
Karsten Hviid, 8, 16, 23, 37 India: Nana Fenge, 17
Historic photos: Anker Tiedemann, 2 Susanne Mertz, 21, 29



Printed in Denmark by Nofoprint A/S

NORDIC MODERN